



## **BULLDOG® Waterborne Adhesion Promoter System**

---

QWB171, WWB171  
EPC535, PPC535

(Quart, 8oz)  
(7.6 lbs, 16oz)



**BULLDOG® Waterborne Adhesion Promoter** is designed to promote adhesion of waterborne coatings to all major raw and primed plastics, as well as pre-painted metal. This patent-pending formula eliminates the need for a primer/sealer, and is VOC Compliant in all areas of the country. Use in conjunction with **BULLDOG® Abrasive Prep & Clean** to ensure perfect adhesion every time!

---

### **FEATURES:**

One Component  
Makes Paint Stick  
  
Reduces Labor and  
Material Costs  
VOC Compliant  
Water-based  
  
Basecoat Blender

### **BENEFITS:**

No Mixing Required – Ready to Spray  
Promotes adhesion on most plastic surfaces,  
including TPO, polypropylene, and SMC  
Eliminates the need for Primer/Sealer  
  
Reduces VOC content from 540 to 236 g/L  
Non-flammable, low odor formula increases  
shop safety and is more environmentally  
friendly  
Improves flake orientation and color consistency  
Improves melt-in and edge wetting

---

### **Compatible Coatings:**

- All water-based basecoat systems, and solvent-based primer/sealers.

### **Compatible Surfaces:**

- All common automotive plastic substrates, both raw and primed, as well as pre-painted metal surfaces.





## **BULLDOG® Waterborne Adhesion Promoter System**

---

### **DIRECTIONS FOR USE – PLASTIC SURFACES:**

Carefully read all cautions on the MSDS before use. Proper preparation is critical to the success of all repairs. Follow these steps to achieve maximum performance.

- 1) Set booth temperature to 85° - 90°F.
- 2) Clean and prepare plastic surface with BULLDOG® Abrasive Prep & Clean. Rinse well with clean water and dry surface. (see page 6 for application instructions)
- 3) Tack surface thoroughly with a clean tack cloth. Do not press tack cloth firmly against surface, as tack material may transfer to bumper and cause defects.
- 4) Shake *gently* and filter before use. Apply a single, thin coat of BULLDOG® Waterborne Adhesion Promoter over entire plastic surface. No mixing or dilution is required. A properly applied film should appear uniform, continuous and free of any voids.
- 5) Allow 15-20 minutes to dry. Use of air drying equipment will shorten dry time. **BULLDOG® visually changes from hazy to clear once completely dried.** Dry times vary depending on temperature and humidity.
- 6) Proceed with normal basecoat/clearcoat finishing process. A final cure of 20-30 minutes at 140°F is recommended.

---

**Recommended Gun Setup:** HVLP Tip Size 1.2mm – 1.4mm

**Dry Times:** 15 – 20 minutes

\*\*Dry times vary depending on temperature and humidity.

**Scratch Fill:** 400 – 500 grit

**Film Thickness (Dry):** 0.3 - 0.5 mils

**Equipment Cleaning:** All tools and spills should be cleaned immediately. Do not allow BULLDOG® to dry in spray gun. Flush spray gun with water until water runs clear. Follow with NAKED GUN® Spray Gun Paint Remover (ENGC11131).

**Note:** Bulldog is effective up to 24 hours. After 24 hours, a light scuff is recommended before proceeding with basecoat.





## **BULLDOG® Waterborne Adhesion Promoter System**

---

### **DIRECTIONS FOR USE – SPOT REPAIR ON PLASTIC SURFACES:**

Carefully read all cautions on the MSDS before use. Proper preparation is critical to the success of all repairs. Follow these steps to achieve maximum performance.

- 1) Set booth temperature to 85° - 90°F.
- 2) Clean and prepare plastic surface with BULLDOG® Abrasive Prep & Clean. Rinse well with clean water and dry surface. (see page 6 for application instructions)
- 3) Tack surface thoroughly with a clean tack cloth.
- 4) Shake *gently* and filter before use. Apply a single, thin coat of BULLDOG® Waterborne Adhesion Promoter over entire plastic surface. No mixing or dilution is required. A properly applied film should appear uniform, continuous and free of any voids.
- 5) Allow 15-20 minutes to dry. **BULLDOG® visually changes from hazy to clear once completely dried.** Dry times vary depending on temperature and humidity.
- 6) This blending wet bed will allow the dry spray from waterborne basecoats to melt in and prevent mottling of pearl/metallic waterborne basecoats.
- 7) Proceed with normal basecoat/clearcoat finishing process. A final cure of 20-30 minutes at 140°F is recommended

---

### **DIRECTIONS FOR USE – METAL SURFACES:**

Carefully read all cautions on the MSDS before use. Proper preparation is critical to the success of all repairs. Follow these steps to achieve maximum performance.

- 1) Set booth temperature to 85° - 90°F.
- 2) Wash the area to be painted with soap and water. Clean with KLEAN-STRIP® PREP-ALL®.
- 3) Sand the repair area with 400-600 grit sandpaper or a gray scuff pad.
- 4) If the painted surface has been broken through to metal, then apply 1-2 coats of primer-sealer over bare metal spots. Follow manufacturers' instructions for



application and dry times. (Do not use BULLDOG® Waterborne Adhesion Promoter on bare metal.)

- 5) Clean and prepare the surrounding blend area with BULLDOG® Abrasive Prep & Clean (see pg 6 for application instructions). Rinse well with clean water. Then clean surface with KLEAN-STRIP® PREP-ALL®. Wipe dry with a clean cloth.
- 6) Tack surface thoroughly with a clean tack cloth.
- 7) Shake BULLDOG® Waterborne Adhesion Promoter *gently* and filter before use. No mixing or dilution is required. Apply a single, thin coat over repair area. A properly applied film should appear uniform, continuous and free of any voids.
- 8) Allow 15-20 minutes to dry. **BULLDOG® visually changes from hazy to clear once completely dried.** Dry times vary depending on temperature and humidity.
- 9) This blending wet bed will allow the dry spray from waterborne basecoats to melt in and prevent mottling of pearl/metallic waterborne basecoats.
- 10) Proceed with normal basecoat/clearcoat finishing process. A final cure of 20-30 minutes at 140°F is recommended

---

#### **Additional Notes:**

- DO NOT mix with any other coating, including all basecoats, clearcoats, primers, etc, regardless of composition.
- Not recommended for use under solvent-based basecoats. However, BULLDOG® can be used under solvent-based primer/sealers.
- Can be used in all situations where spot repair is necessary.
- Do not use on bare metal surfaces.
- Do not allow to freeze. Product that has been frozen and then thawed will not be in solution and will not pass through a filter. Do not use.
- To avoid contamination, do not pour used material back into the original container.





## BULLDOG® Waterborne Adhesion Promoter System

	QWB171, WWB171
<b>Appearance</b>	Liquid, milky white, mobile
<b>Vapor Density</b>	Heavier than air
<b>Percent Volatile</b>	85%
<b>Flash Point</b>	None
<b>CPSC Flammability Classification</b>	Non-Flammable
<b>Density</b>	8.4 lbs/gal
<b>VOC Category</b>	Adhesion Promoter
<b>Max VOC Content</b>	540 g/L
<b>VOC Content</b>	236 g/L = 4.4% = 1.97 lbs/gal, excluding water and exempt solvents (Regulatory or Coatings VOC calc)
<b>VOC Content</b>	42 g/L = 4% (Actual VOC)
<b>MAX Vapor Pressure of the V.O.C.</b>	< .01 mmHg
<b>Storage</b>	Store between 40°F and 95°F, in the original container. Do not allow to freeze.
<b>Shelf Life</b>	Two years from date of manufacture, in an unopened container. Once open, use within 6 months.
<b>DOT</b>	Not Regulated
<b>HAPS</b>	None
<b>Coverage</b>	Up to 800 sq. ft. per quart
<b>Boiling Range</b>	212°F

### ORDERING INFORMATION

Product	Size	Pack	Case Wt	Case Cube	Unit Width	Unit Depth	Unit Height	UPC Code	Pallet Qty
QWB171	QT	6	13.84	.477	3.65"	3.65"	8.245"	0 30192 00171 4	480
WWB171	8oz	12	7.5	.35	2.24"	2.24"	6.08"	0 30192 80171 1	1512

©2014 W.M. Barr & Co., Inc.  
P.O. Box 1879  
Memphis, TN 38101  
800.238.2672  
[www.bulldogsticks.com](http://www.bulldogsticks.com)  
[www.kleanstripauto.com](http://www.kleanstripauto.com)





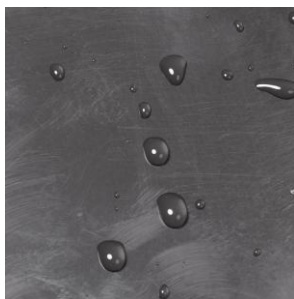
## **BULLDOG® Waterborne Adhesion Promoter System**

### **EPC535, PPC535 – BULLDOG® Abrasive Prep & Clean**

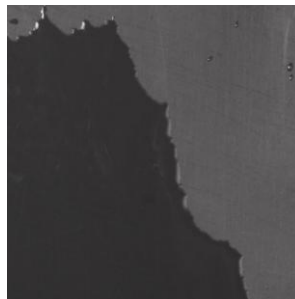


#### **DIRECTIONS FOR USE :**

1. Apply product using a wet gray scuff pad. Scuff entire bumper surface. Re-apply to scuff pad as needed to maintain a wet, soapy surface. While scuffing, be mindful to treat recessed areas and corners.
2. Rinse off thoroughly with clean water ensuring the surface is free of any loose particles.
3. To ensure part is ready for adhesion promoter application, mist a small area with water. If sheeting occurs, dry the surface and proceed. If water beads up, repeat cleaning as directed above.
4. Dry surface with cloth or forced air. Immediately before painting, wipe surface thoroughly with a clean tack cloth.



**Beading**



**Sheeting**





## **BULLDOG® Waterborne Adhesion Promoter System**

	<b>EPC535, PPC535</b>
<b>Appearance</b>	Opaque Gray
<b>Vapor Density</b>	Heavier than air
<b>Percent Volatile</b>	61%
<b>Flash Point</b>	None
<b>CPSC Flammability Classification</b>	Non-Flammable, Waterbased
<b>Density</b>	9.8 lbs/gal
<b>VOC Category</b>	Surface Prep for Coatings Applications
<b>Actual VOC Content</b>	25 g/L 2.5% 0.021 lbs/gal
<b>MAX Vapor Pressure of the V.O.C.:</b>	.04 mmHg
<b>Storage</b>	Protect from freezing. Store between 32°F and 120°F, in the original container.
<b>Shelf Life</b>	Two years from date of manufacture, in an unopened container.
<b>DOT</b>	Buffing Compounds, N.O.I.
<b>HAPS</b>	None

### **ORDERING INFORMATION**

<b>Product</b>	<b>Size</b>	<b>Pack</b>	<b>Case Wt</b>	<b>Unit Wt</b>	<b>Unit Width</b>	<b>Unit Depth</b>	<b>Unit Height</b>	<b>UPC Code</b>	<b>Pallet Qty</b>
EPC535	7.6 lbs	4	33.5	7.98	7.65"	7.65"	6.0"	0 30192 01535 3	144
PPC535	16oz	12	15.1	1.10	3.41"	1.85"	8.25"	0 30192 12535 9	1368

©2014 W.M. Barr & Co., Inc.  
P.O. Box 1879  
Memphis, TN 38101  
800.238.2672  
[www.bulldogsticks.com](http://www.bulldogsticks.com)  
[www.kleanstripauto.com](http://www.kleanstripauto.com)

