



## BULLDOG® VOC Compliant Adhesion Promoter System

Technical Data Sheet for Professionals – For Use in VOC Regulated States\*

**GTPO125, QTPO125**  
**PPC535, EPC535**

VOC Compliant Adhesion Promoter (Gal, Qt Liquid)  
Abrasive Prep & Clean (16oz, 7.6 lb)



**BULLDOG® VOC Compliant Adhesion Promoter** is the premier adhesion promoter for the automotive collision repair and industrial markets. Bulldog® is a single-component product that combines an adhesion promoter, flex agent and blending aid in one. It is fast-drying and provides superior adhesion on all flexible and rigid plastic parts. **Bulldog® Abrasive Prep & Clean** is an advanced emulsion, combining water and solvent technologies. It removes wax, grease, and the mold release agents that can cause fisheyes. It is an excellent blend prep. We offer a Limited Lifetime Warranty† when using The Bulldog System as directed.

- Provides superior adhesion
- Works on most automotive plastics
- Single component, ready to spray – no mixing required
- Dries clear in 25-30 minutes (dry time varies with temperature and humidity)
- Adhesion Promoter and Flex Agent in one
- Unused product can be poured back into the can
- Tint with basecoat for visible color coverage
- Improves flake orientation and color consistency
- Improves melt-in and edge wetting
- \*GTPO125/QTPO125 Not for sale in these CA districts: Bay Area, Imperial and San Diego.

†Refer to [www.kleanstripauto.com](http://www.kleanstripauto.com) for details on Limited Lifetime Warranty.

**Compatible Coatings:** All solvent-based urethane, epoxy, or acrylic lacquers, primers, sealers and basecoats.

**Compatible Surfaces:** All common automotive plastics, such as TPO, SMC, and polypropylene. Bulldog is suitable for ground effects, new flexible and rigid bumpers, as well as plastic interior and exterior parts. (Always test in an inconspicuous area, as every surface is different. Always apply basecoats and clearcoats according to manufacturer's instructions).



## **GTP0125/OTPO125 DIRECTIONS FOR USE:**

Carefully read the entire product label and all precautions on the SDS prior to use. Proper preparation is critical to the success of all repairs. Follow these steps to achieve maximum performance.

1. Clean all areas to be painted with BULLDOG® Abrasive Prep & Clean using a gray scuff pad (refer to page 6 for instructions).
2. Rinse thoroughly with clean water, and blow dry the surface.
3. Tack dry surface thoroughly with a clean tack cloth. Do not press tack cloth firmly against surface, as tack material may transfer to bumper and cause defects.
5. Shake well and filter before each use to secure a uniform mixture. Apply a single, medium closed coat of BULLDOG® VOC Compliant Adhesion Promoter over entire plastic surface. A properly applied film should appear uniform, continuous and free of any voids.
6. Allow 25 to 30 minutes before applying the next coating, or when tack free. *Dry times may vary based on temperature and humidity.*
7. Once tack-free, proceed with normal basecoat/clearcoat process, according to manufacturer's instructions.

---

## **Technical Data**

<b>Recommended Gun Setup:</b>	HVLP Tip Size 1.2mm – 1.4mm
<b>Air Pressure:</b>	Refer to spray gun specs
<b>Apply:</b>	1 medium closed coat
<b>Dry Film Thickness</b>	1 Coat: 0.3 - 0.6 mils
<b>Dry Times:</b>	25 – 10 minutes @ 70F, or tack free **Dry times vary depending on temperature and humidity.
<b>Tinting:</b>	Mix 90% Bulldog with 10% basecoat for visible color coverage.
<b>Flex Agent:</b>	Ratio 1:4 Bulldog with basecoat Ratio 1:3 Bulldog with clearcoat

**Cleanup:** All tools and spills should be cleaned immediately with Naked Gun® VOC Compliant Gun Cleaner (CGC112) or Naked Gun® Spray Gun Cleaner Aerosol (ENGC0). Clean spray gun according to manufacturer's instructions.

### **Notes:**

- BULLDOG® has a 24-hour open time. If the part is left longer than 24 hours, tack, and apply 1 even, light coat of BULLDOG® before applying the next coating.
- BULLDOG® covers 400 grit scratches and above.
- This product may not be compatible with all surfaces and all conditions surrounding application. Before applying to any surface, always test in an inconspicuous area to ensure no damage will result.



## Additional Tips for Using Bulldog VOC Compliant Adhesion Promoter

1. Use Bulldog as a mid-coat adhesion promoter, effectively “tying” multiple layers of paint together. Great for use when doing special paint effects, such as flames, two-tone paint jobs, etc. Bulldog will also improve the flop/alignment of metallic pigments in blend-out areas.
2. When using Bulldog as an added flex agent in a clear, be sure to add the Bulldog after the clear has been catalyzed. (Ratio 1:3 Bulldog to mixed clear)
3. Bulldog can be added to primer in a ratio of up to 1:3.
4. Bulldog cannot be *mixed* with waterborne paint. However, Bulldog **can** be used in a waterborne system, as long as it is applied underneath the primer-sealer.
5. Metal primer overspray onto plastic surfaces should be removed, as it can cause paint failure. Bulldog overspray onto plastic is not an issue.
6. Bulldog can be used on plastic interior parts, such as dashboards, kick panels, visors, etc., prior to dyeing or painting. Solvent-based dyes can be mixed with Bulldog (up to 50%) before application.
7. Bulldog should not be used on Lexan® or polyethylene surfaces.
8. Abrading of the substrate is essential for successful coating application. We recommend the use of Bulldog Abrasive Prep & Clean, but even gentle scuffing with a red or grey scuff pad will greatly increase the bite of the coating.

<b>TECHNICAL DATA:</b>	<b>GTPO125/QTPO125</b>
<b>Appearance</b>	Clear, colorless to slightly hazy yellow liquid, mobile, dries to Class A water-white finish
<b>Percent Volatile</b>	80.76% by weight
<b>Flash Point</b>	38°F
<b>CPSC Flammability Classification</b>	Flammable
<b>VOC Category (Max Allowable VOC)</b>	Adhesion Promoter (540 gm/liter)
<b>Actual VOC</b>	540 gm/liter 4.4 lbs/gal 22.7% by weight.
<b>Storage</b>	Store between 32°F and 95°F, in the original container.
<b>Density</b>	7.3 lbs/gal
<b>Shelf Life</b>	2 years from date of manufacture, in an unopened container
<b>DOT</b>	UN1263, Paint Related Material, 3, PGII, Ltd. Qty
<b>Prop 65</b>	⚠ This product can expose you to chemicals including Ethylbenzene and Styrene, which are known to the State of California to cause cancer and Toluene, which is known to the State of California to cause birth defects or other reproductive harm. For more information, go to <a href="http://www.p65warnings.ca.gov">www.p65warnings.ca.gov</a> .
<b>Restrictions</b>	Not for sale in Bay Area AQMD, Imperial Co AQMD and San Diego APCD.



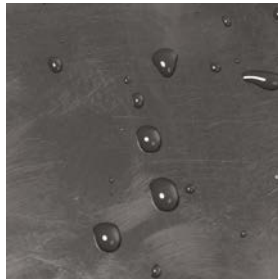


## BULLDOG® Adhesion Promoter System

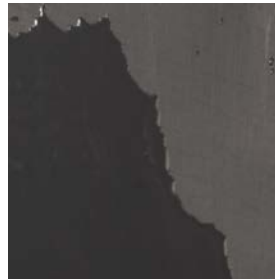
### EPC535/PPC535 DIRECTIONS FOR USE:

Carefully read the entire product label and all precautions on the SDS before use. Proper preparation is critical to the success of all repairs. Follow these steps to achieve maximum performance.

1. Apply product using a wet gray scuff pad. Scuff entire bumper surface. Re-apply to scuff pad as needed to maintain a wet, soapy surface. While scuffing, be mindful to treat recessed areas and corners.
2. Rinse off thoroughly with clean water ensuring the surface is free of any loose particles.
3. To ensure part is ready for adhesion promoter application, mist a small area with water. If sheeting occurs, dry the surface, and proceed. If water beads up, repeat cleaning as directed above.
4. Dry surface with cloth or forced air. Immediately before painting, wipe surface thoroughly with a clean tack cloth.



**Beading**



**Sheeting**

<b>TECHNICAL DATA:</b>	<b>PPC535/EPC535</b>
<b>Appearance</b>	Opaque gray
<b>Percent Volatile</b>	61% by weight
<b>Flash Point</b>	None
<b>CPSC Flammability Classification</b>	Non-Flammable, Waterbased
<b>VOC Category (Max Allowable VOC)</b>	General Purpose Degreaser (0.5%)
<b>Actual VOC</b>	0.0% by weight
<b>Storage</b>	Protect from freezing. Store between 32°F and 120°F, in the original container.
<b>Density</b>	9.8 lbs/gal
<b>Shelf Life</b>	2 years from date of manufacture, in an unopened container
<b>DOT</b>	Not Regulated

### ORDERING INFORMATION

Product	Size	Pack	Lbs	Case Cube	Unit Width	Unit Depth	Unit Height	UPC Code	Pallet Qty
QTPO125	QT	6	13	0.40	3.4"	3.4"	8.7"	0 30192 12515 1	528
GTPO125	GL	4	35	0.75	6.6"	4.1"	10.3"	0 30192 12525 0	208
PPC535	16oz	12	13	0.47	3.4"	1.8"	8.3"	0 30192 12535 9	1368
EPC535	7.6 lb	4	34	1.14	7.6"	7.6"	7.6"	0 30192 01535 3	144

